

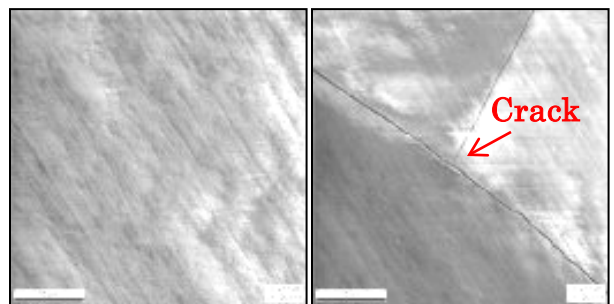
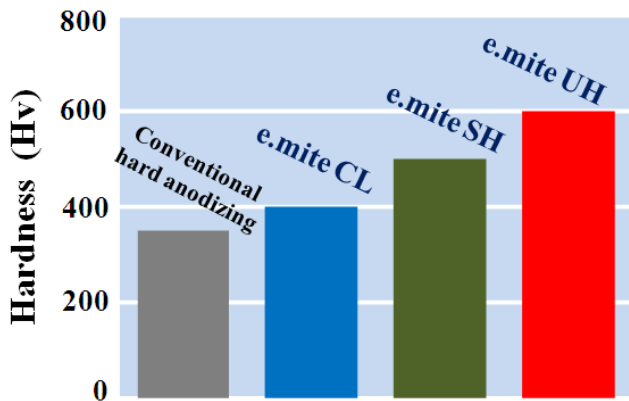
# e.mite

The KUMABOU METAL Corporation of Kumamoto in Japan provides the safest non-burning aluminum anodizing process for hard anodizing aluminum. Our aluminum anodizing produces superior corrosion and abrasion resistance, compared to conventional hard anodizing aluminum.

## ○ Features

<b>e.mite CL</b>	<ul style="list-style-type: none"> <li>◇ The hard anodic oxide film with <b>non-crack</b></li> <li>◇ Good flatness by low amount of roughness change</li> <li>◇ The hard anodizing is available clear-colors</li> </ul>
<b>e.mite SH</b>	<ul style="list-style-type: none"> <li>◇ The anodic oxide film with hardness of <b>Hv500</b></li> <li>◇ The equivalent coloring to conventional hard anodizing</li> <li>◇ Thick and hard anodic oxide film with thickness of <b>100um</b></li> </ul>
<b>e.mite UH</b>	<ul style="list-style-type: none"> <li>◇ The anodic oxide film with non-crack and hardness of <b>Hv600</b></li> <li>◇ Good flatness by low amount of roughness change</li> <li>◇ Superior corrosion and abrasion resistance</li> </ul>

## ○ Performance



**e.mite CL**

**Conventional hard anodizing**

Anodic coating	Appearance	Corrosion resistance by CASS test	Abrasion resistance by #240·2Kgf test
<b>e.mite CL</b>	Non-crack	40Hr RN9.8	23 DS/mg
<b>e.mite SH</b>	Crack	40Hr RN9.8	52 DS/mg
<b>e.mite UH</b>	Non-crack	40Hr RN9.8	75 DS/mg
Conventional hard anodizing	Crack	24Hr RN9.5	23 DS/mg

## CONTACT US

[Estimate/Order]

Management Division

Email : gyomu@kb-m.co.jp

[Technical Question]

Technical Division

Email : gijutu@kb-m.co.jp



**KUMABOU METAL Co., Ltd.**

1-4-15 Nagamine-Nishi, Kumamoto 861-8037, Japan

<http://www.kb-m.co.jp>

TEL : 096-382-1302

FAX : 096-382-0352

